

## LithoPore® LPAC Floor Sub-Filling



[www.blauer-engel.de/uz132](http://www.blauer-engel.de/uz132)

- low emissions
- low pollutant content
- no adverse impact on health in the living environment

### Contact

LithoPore Europe GmbH  
Goerzallee 309  
14167 Berlin  
Germany

Email: [info@lithopore.com](mailto:info@lithopore.com)

## Product description

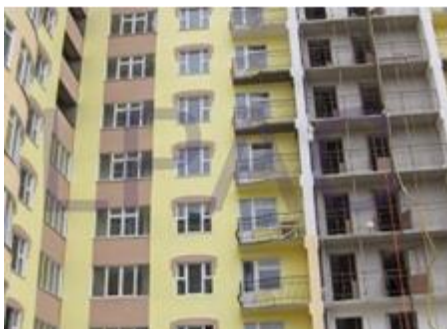
---

**LithoPore® - LPAC Floor Subfilling** can be cast under floor screeds as a stable compensation and filling layer with insulating properties. It is accessible as soon as the day after application. An additional supply of energy for the curing process is not required. On top normally the final floor screed can be applied if the density of the Subfilling is very low. In some countries also higher densities for LithoPore® - LPAC Floor Subfilling are applied to placed directly tiles on top.

## Highlights

---

- Low Weight
- Fireproofed (totally inorganic)
- Fully recyclable (ordinary construction waste)
- Time and personnel resource-saving application and installation compared to the usage of polystyrene plates



## Specification

Metric	LithoPore200-800		
	Standard	entity	value
dry bulk density $\rho_{105\text{ }^{\circ}\text{C}}$	DIN EN 1602 [2]	[kg/m <sup>3</sup> ]	200-800
thermal conductivity $\lambda_{10, \text{tr}}$	DIN EN 12667 [13]	[W/mK]	0,06 - 0,23
compressive strength $\sigma_{10\%}$	DIN EN 826 [4]	[MPa]	0.25-6

Imperial	LithoPore200-800		
	standard	entity	value
dry bulk density $\rho_{105\text{ }^{\circ}\text{C}}$	ASTM C 1693	[pcf]	12.5-49.9
thermal conductivity $\lambda_{10, \text{tr}}$	ASTM C 177 ASTM C 518	[R-value per in]	0.63-2.4
compressive strength $\sigma_{10\%}$	ASTM C 1693	[PSI]	37-882





---

The information contained in this product specification is based on our current state of knowledge and experience. It does not free the user from making his own tests and trial applications. A legally binding assurance of certain properties cannot be inferred from this information. Any existing patent rights as well as any pertinent legal regulations must be observed by the recipient of our products under his own responsibility.

